

HIGH CAPACITY TIE DOWN PLATES

FEATURES AND BENEFITS

EASY: Comes in a kit with washers ready to install onto tie down rods.

STRONG: 8.0mm G250 hot dipped galvanised steel.

VERSATILE: Curved washer design allows for different roof pitches up to a maximum of 30 degrees.

SPECIFICATIONS

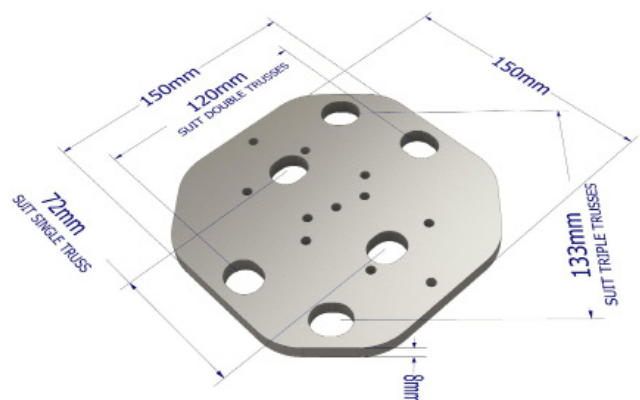
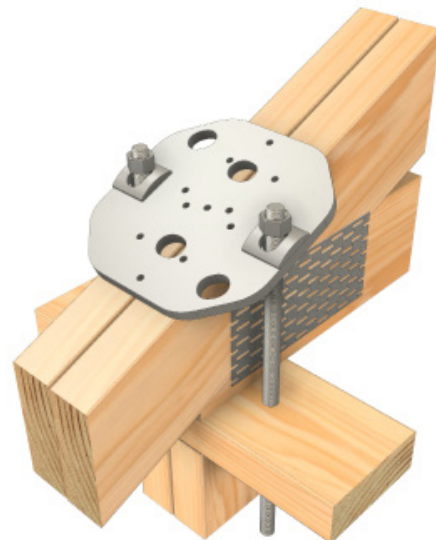
STEEL	G250
THICKNESS	8.0mm
CORROSION RESISTANCE	Hot Dip Galvanised
PRODUCT CODES	HCTD – For standard timber frames
PACKING	HCTD – 10 kits 1 x HCTD plate 2 x HCTD/OW curved (over) washers to suit M12 rods

Extreme tie down capacity, perfect for girder trusses in cyclonic areas.



AS1684 COMPLIANT

- Designed and tested in accordance with Australian standards (AS1649)
- Minimum Z275 Galvanised Steel



DESIGN CAPACITIES

SINGLE PLATE

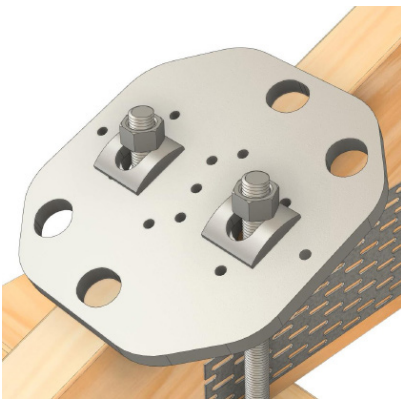
TIMBER GRADE	TRUSS LAMINATES(2)	DESIGN CAPACITY(5) (KN)	MINIMUM TIE-DOWN ROD/MIN. GRADE
LVL 10/13 MGP 10/12	Single	45.0	2/M12 (4.6s)
	Multiple	54.0	2/M12 (4.6s)
LVL 14, 18 F17, F27	Single	54.0	2/M12 (4.6s)
	Multiple	54.0	2/M12 (4.6s)

Notes:

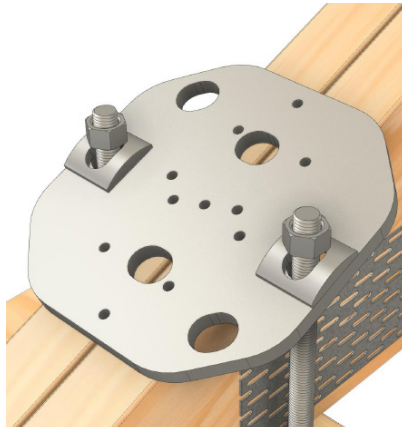
1. This Table values are valid for both internal and external tie-downs.
2. Single refers to 1/35 or 1/45 truss laminate. "Multiple" refers to any multiple laminate (2/35, 2/45 or 3/35).
3. The HCTD plate should be orientated correctly to accommodate single, double, or triple laminated trusses. See illustration.
4. The Design Capacities given here are valid only if the tie-down rods are adequately anchored to the ground.

INSTALLATION DETAIL USING SINGLE PLATE

SINGLE TRUSS



DOUBLE TRUSS



TRIPLE TRUSS



IMPORTANT:

READ THIS DATASHEET IN CONJUNCTION WITH PRYDA CONNECTORS & TIE-DOWN CONNECTORS DESIGN GUIDE AND REFER TO ESSENTIAL NOTES AND GENERAL NOTES.

DESIGN CAPACITIES

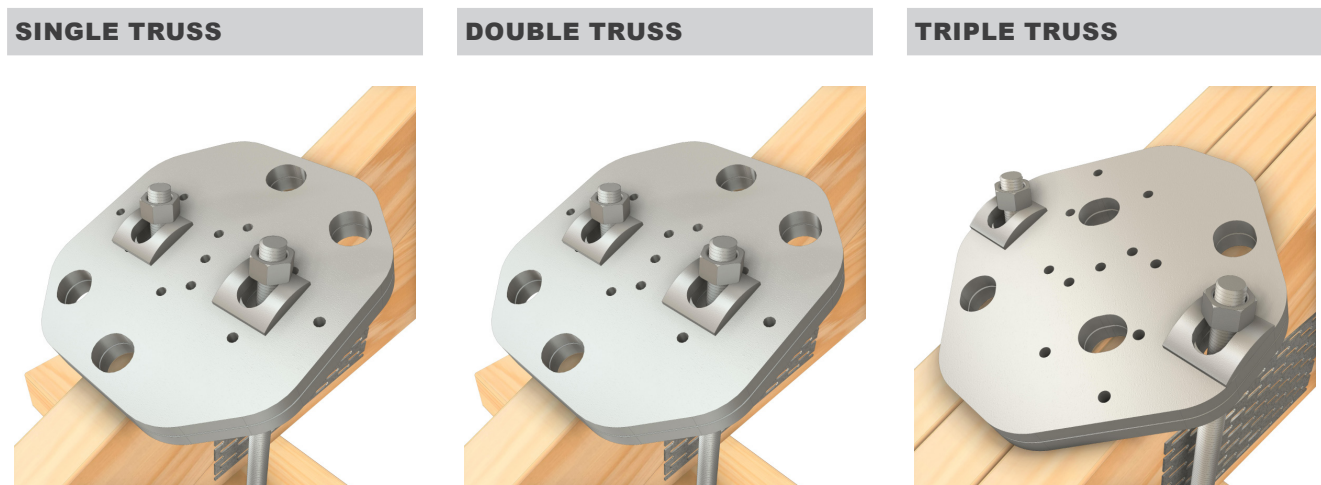
DOUBLE PLATE

TIMBER GRADE	TRUSS LAMINATES(2)	DESIGN CAPACITY(5) (KN)	MINIMUM TIE-DOWN ROD/MIN. GRADE
LVL 10/13 MGP 10/12	Single	45.0	2/M12 (4.6s)
	Multiple	90.0	2/M12 (8.8s) ⁴
LVL 14, 18 F17, F27	Single	75.0	2/M12 (8.8s) ⁴
	Multiple	100.0	2/M12 (8.8s) ⁴

Notes:

1. This Table values are valid for both internal and external tie-downs.
2. Single refers to 1/35 or 1/45 truss laminate. "Multiple" refers to any multiple laminate (2/35, 2/45 or 3/35).
3. The HCTD plate should be orientated correctly to accommodate single, double, or triple laminated trusses. See illustration.
4. 4Nuts supplied with kits are grade 4.6s. Upgrade nuts used with M12 (8.8s) to grade 8.8s
5. The Design Capacities given here are valid only if the tie-down rods are adequately anchored to the ground.

INSTALLATION DETAIL USING DOUBLE PLATES



LOOKING FOR MORE DETAILS OR OTHER CONNECTORS IN OUR RANGE?
SEE OUR CONNECTORS & TIE-DOWN CONNECTORS DESIGN GUIDE AVAILABLE AT [PRYDA.COM.AU](https://www.pryda.com.au)